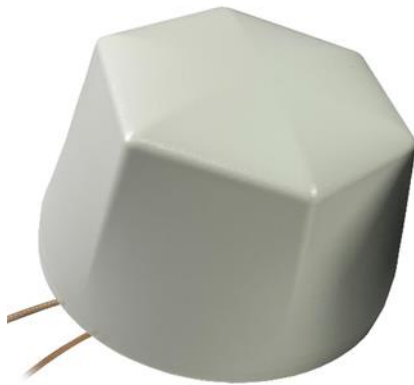


451 / 451/1 Planar Antenna

White / Black TETRA / GPS / 2 x LTE-5G

ANTENNA TYPE	Heavy duty omni-directional Tetra groundfree patch antenna with integrated active GPS/GLONASS/GALILEO and MIMO 2 x LTE-5G antenna for roof mounting on trucks, trailers etc. * LOW PROFILE DESIGN * CAR-WASH PROOF * NO GROUNDPLANE NEEDED
Tetra Antenna: FREQUENCY	½ Lambda 380 – 410 MHz
IMPEDANCE POLARISATION GAIN (dBi)	Nom. 50 Ω Omnidirectional 3 dBi
VSWR	< 2.6
GPS/GLONASS/GALILEO Ant.: ANTENNA TYPE FREQUENCY BANDWIDTH IMPEDANCE POLARISATION GAIN (LNA) NOISE FIG. POWER SUPPLY VSWR	Active Planar Patch Antenna 1580 MHz ± 28 MHz 50 Ω RHC (Right Hand Circular) 25 dB 1.7 ÷ 2.1 dB 2.7 ÷ 5.1 V < 2.0
LTE+5G Antenna: FREQUENCY	2x LTE MHz: 698-960 (1) / 1710-2170 (2) / 2300-2690 (3) / 3400-3800 (4)
IMPEDANCE POLARISATION GAIN (dBi) VSWR	Nom. 50 Ω Vertical LTE : (1) 2 / (2) 5 / (3) 5 / (4) 5 < 2.2
MAX. POWER	50 Watt
COLOUR	White / Black
DIMENSIONS/ BUILD-IN DEPTH	Ø 140 x 82 mm / Approx. 16 mm
WEIGHT	400 g
MOUNTING	Preferable on horizontal surface (Mounting hole Ø 16 mm)
MATERIAL	PA6 IP67 Classified (when mounted on vehicle); UV-resistance
TEMPERATURE	-30°C - +80°C

MOUNT TYPE	Bolt-on type with double self-adhesive tape for effective sealing
CABLE / CONNECTOR	TETRA: ca. 0,30 m RG316 cable and Fakra (m) (UNIVERSAL) GPS: ca. 0,30 m RG316 cable and Fakra (m) (BLUE) 2 x LTE-5G ca. 0,30 m RG316 cable and Fakra (m) (RED)



451 Planar white



451/1 Planar black